



ODORIZERS

planet-friendly solutions
that just make scents!



GPL 5000 ODORIZER

**Natural Gas and Propane (LP) Odorization
for High Flow at Low-Pressure Conditions**

THE FUTURE OF ODORIZATION NOW



Setting the Industry Standard in Gas Odorization

GPL 5000 NATURAL GAS & PROPANE ODORIZER

The GPL 5000 is an advanced odorizer ideal for natural gas and propane odorization, particularly in high-flow stations at low pressures. The odorizer utilizes proprietary technology and has high rangeability, delivering extraordinary high and low flow accuracy.

ZERO EMISSIONS, ZERO ODOR

Unlike traditional systems, the GPL 5000 operates using differential pressure instead of pipeline gas - eliminating gas waste and emissions. Its innovative sealed-loop design prevents both gas and odorant discharge, ensuring odor-free operation and maintenance while protecting the environment.

THE GPL STANDARD OF EXCELLENCE:

- Zero-emission design
- Odor-free operation & maintenance
- Streamlined operation & maintenance
- Advanced technology
- Reliable, safe & precise
- 24/7 technical support

SMART CONTROL, SIMPLE OPERATION

The system features an industry-leading PLC with a 7-inch touchscreen interface that simplifies monitoring and control. Modbus compatibility enables seamless SCADA integration while built-in reporting tools streamline audit trails and compliance documentation. A Spanish-language interface is available.

PROACTIVE MONITORING

Real-time alerts delivered via wireless modem or Modbus keep operators informed through smartphones and computers, enabling quick response to potential issues before they impact operations.

VERSATILE APPLICATIONS

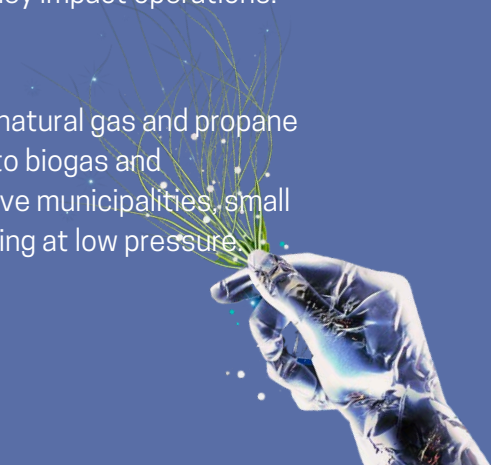
While optimized for high-flow, low-pressure natural gas and propane operations, the GPL 5000 adapts perfectly to biogas and biomethane applications. Its capabilities serve municipalities, small city gate stations, and large stations operating at low pressure.



GPL
ODORIZERS

planet-friendly solutions
that just make *scents!*

GPL Odorizers | www.GPLOdorizers.com



ADVANCED PERFORMANCE MADE SIMPLE

GPL 5000 FEATURES & BENEFITS

ENVIRONMENTAL LEADERSHIP

- Zero-emission technology eliminates gas and odorant discharge
- Sealed-loop design ensures odor-free operation & maintenance
- Prevents false leak reports through controlled containment
- Differential pressure actuation conserves pipeline gas

PRECISION ODORIZATION TECHNOLOGY

- Exact odorant injection synchronized with gas flow
- Prevents both under and over-odorization scenarios
- Superior 512:1 turndown ratio
- Maintains accuracy across all flow conditions, including zero flow

SIMPLIFIED OPERATION

- Clean operation eliminates the maintenance of odorous pneumatic pumps
- Dual moving parts design ensures reliable, long-term performance
- User-friendly interface reduces training time
- Minimal maintenance requirements

INTELLIGENT MONITORING

- Horner PLC system with 7-inch color touchscreen
- Built-in data storage for compliance reporting
- Modbus compatibility for SCADA integration
- Optional Spanish language interface
- Wireless connectivity for remote monitoring
- Instant alerts to mobile devices and computers
- Integrated software platform requires no additional programs

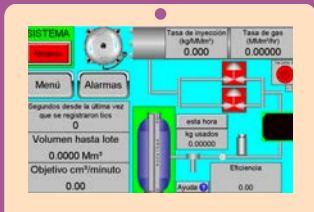
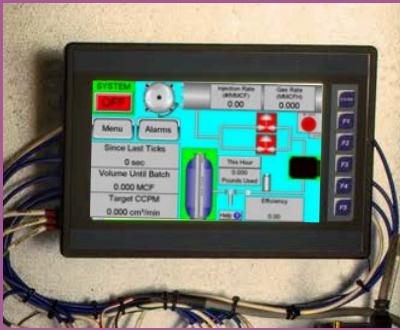
CUSTOMIZABLE CONFIGURATIONS

Safety Classifications

- Class I Division 1 hazardous location rating (Division 2 standard)
- Optional heating system
- GPL 100 thermal mass flow capability
- Thermoelectric generator integration

Installation Options

- Standalone odorizer unit
- Tank integration (60-1000 gallon capacity)
- Complete turnkey system on mobile skid
- Expandable skid for additional equipment
- Portable design for easy transport and setup



GPL 5000 SPECIFICATION SHEET



GPL 5000 Design Configurations

- Odorizer only
- With tank and containment
- Permanent, temporary or pickling
- Turnkey (moveable) system
- With skid extension

Options for GPL 5000

- CL I Div 1
- Heater
- GPL 100 mass flow meter
- Thermoelectric generator



Pictured are turnkey (moveable) systems.

Weight

85 lb. (39 kg)
Mechanical box: 55 lb. (25 kg)
Electronics box: 30 lb. (14 kg)

Power

Typical: 2 amps DC w/ wireless modem
Optional: 3 amps is typical w/ heated display and wireless modem
Optional: TEG

Gas Pipeline Pressure

1 to 400 psi (0.07 to 28 bar)

Odorant Blanket Pressure

10 to 15 psi (1 bar)

Data Logging

Hourly archives with audit trail;
FTP data retrieval; internal micro SD storage

Enclosures

304 stainless steel

Hazardous Area Classification

Standard: CL I Div 2, Groups C and D
Optional: CL I Div 1

Dimensions

Mechanical Box: 24" (H) x 20" (W) x 10" (D); (60.96 cm x 50.8 cm x 25.4 cm)
Electrical Box: 20" (H) x 16" (W) x 9" (D); (50.8 cm x 40.64 cm x 22.86 cm)

Odorant Injection Rate, Batch

0-213667 MSCFD [at an injection rate of 0.5 lb./MMSCFH]

Connections

Myers hub: (1) 3/4 in NPT; (5) 1/2 in NPT
Odorant inlet: 1/4 in Swagelok tubing
Odorant outlet: 1/4 in Swagelok tubing fitting

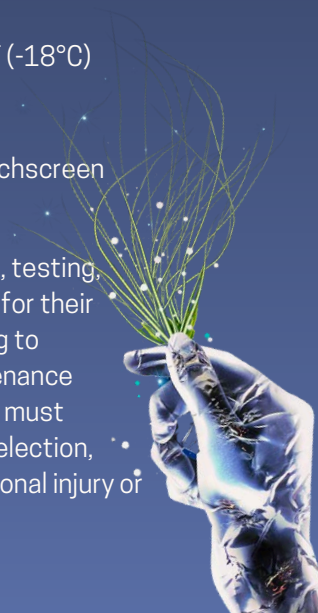
Operating Temperature Range

0 to 120°F (-18 to 49°C)
Optional: heater assembly available for below 0°F (-18°C)

User Interface Options:

- 320x240 LCD color graphics display with touchscreen
- IP remote communication

The end user assumes responsibility for analyzing, testing, and selecting products and materials appropriate for their specific applications. Proper installation according to manufacturer guidelines and adherence to maintenance recommendations are essential, and the end user must ensure compliance with both. Incorrect product selection, improper installation, or misuse may result in personal injury or property damage and will void the warranty.



SETTING THE ZERO-EMISSION STANDARD

PIONEERING ENVIRONMENTAL RESPONSIBILITY

GPL Odorizers leads the industry in emissions-free gas odorization technology. Built on 20+ years of proven differential pressure principles, our systems feature a sealed-loop design that eliminates gas and odorant discharge while ensuring odor-free operation and maintenance. Though powered by advanced technology, our systems remain straightforward to operate and maintain while handling the most demanding applications.

EXPERT SUPPORT AVAILABLE 24/7

When you call GPL Odorizers' technical support line, you'll speak directly with an experienced technician or engineer - never a help desk or answering service. Our team of professionals provides knowledgeable, friendly assistance focused on resolving your concerns quickly and effectively.

LincEnergySystems
making a measurable difference

AUTHORIZED DISTRIBUTION PARTNER

Linc Energy Systems serves as GPL Odorizers' primary distributor, certified equipment trainer, and authorized service provider. Their comprehensive 1-Source Odorization Program delivers complete turnkey solutions that streamline project management and minimize client oversight. The program encompasses:

- Planning & Engineering
- Equipment Acquisition
- Operations Support
- Maintenance Services
- System Decommissioning
- Equipment Disposal

LINC ENERGY SYSTEMS

303.697.6701
info@LincEnergySystems.com
www.LincEnergySystems.com

GPL ODORIZERS

12450 W. Cedar Drive
Lakewood, CO 80228
303.927.7683
info@gplodorizers.com
www.GPLOdorizers.com

GPL
ODORIZERS
planet-friendly solutions
that just make scents!



GPL MODEL COMPARISON

Advanced Odorization

GPL Odorizers Models	GPL 750	GPL 5000	GPL 510	GPL 10000
 Appropriate Flow Conditions	Low, intermittent, & no flow	low & high flow, medium pressure	High-pressure, low and medium flow	High-pressure, high flow
 Gases	Natural gas, RNG, biogas	Natural gas, RNG, biogas, propane (LP)	Natural gas, RNG, biogas, propane (LP)	Natural gas
 Applications	Municipalities, small city gate stations	Municipalities, small to large city gate stations*	City gate stations, transmission lines, municipalities, RNG*	Large city gate stations, transmission lines
 Odorant Injection Type	Batch	Batch	Batch or continuous	Continuous
 Actuated By	Differential Pressure	Differential Pressure	Electric-powered bellows pump	Electric-powered dual bellows pump
 Zero Emissions				
 Odor Free Operation and Maintenance				
 Gas Pipeline Pressure	1 to 225 PSI	1 to 400 PSI	Up to 1480 PSI	Up to 1480 PSI
 Odorant Injection Min - Max Flow Rate (MSCFH) [<small>@0.5 lbs./MMSCFH</small>]	750 (std); 1000 (HC model)	0-21,366.67	0.2 to 5000	0.2 to 10000
 Turndown Ratio	180,000:1	512:1	25,000:1	50,000:1
 Operating Temp Range	0 to 120°F (-18 to 49°C)	0 to 120°F (-18 to 49°C)	0 to 140°F (-18 to 60°C)	0 to 140°F (-18 to 60°C)
 Horner Controller 7" color touchscreen				
 Tank Sizes	60, 120, 250 gal	60, 120, 250, 500, 1000 gal	60, 120, 250, 500, 1000 gal	60, 120, 250, 500, 1000 gal
 Hazardous Area Class	CL I Div 2 Groups C & D CL I Div 1 (optional)	CL I Div 2 Groups C & D CL I Div 1 (optional)	CL I Div 2 Groups C & D	CL I Div 2 Groups C & D

GPL ODORIZERS

Design Configuration and System Types

Design Configuration:

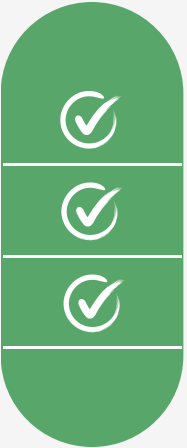
- Odorizer only
- With tank and containment skid
- With skid extension

GPL 750

GPL 5000

GPL 510

GPL 10000

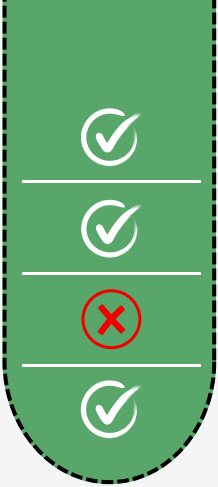


GPL 750

GPL 5000

GPL 510

GPL 10000



Complete System Types:

- Permanent
- Temporary or pickling
- Portable system (easy to move)
- Turnkey system (movable)