

GPL Odorizers

# Software Release Notes

For GPL5000 (XL7) Version 8

Harrison Baer  
6-4-2025

## Version 8.0

### New:

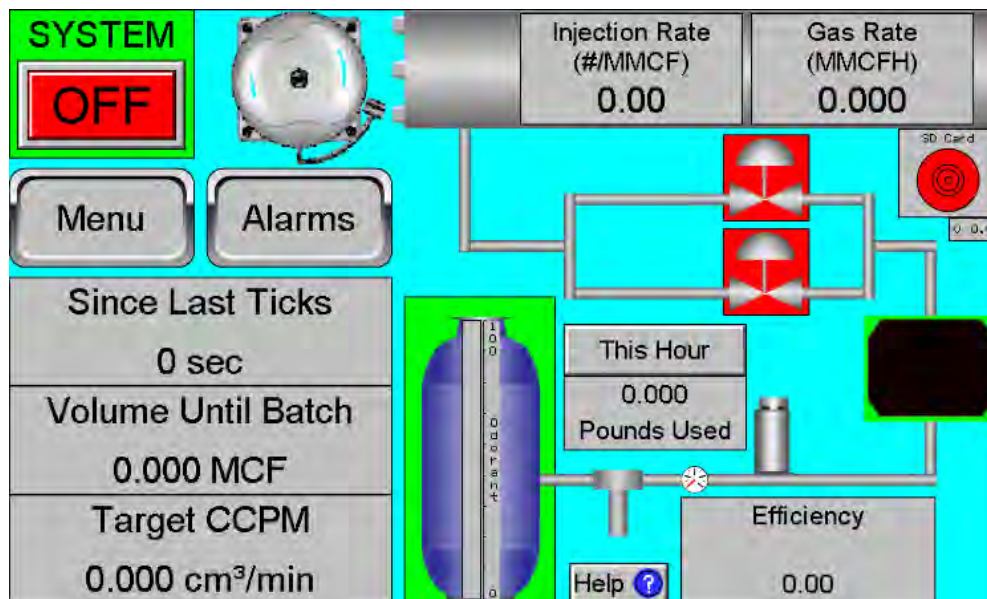
- **Flow Page:** Updated to support the new flow type and flow source
  - The Gas Page has been renamed to the Flow Page to accommodate liquid-on-liquid injection.
  - Added a toggle to switch between gas and liquid modes, accessible only with Admin-level permissions.
  - Introduced a units toggle that allows users to switch between:
    - **Gas mode:** MCFH or MMCFH
    - **Liquid mode:** Gallons or 10<sup>3</sup>gallons
  - **Pulses Flow Source** added to count pulses from a flow meter rather than receiving a 4-20 mA signal.

Flow Type		Actual Gas Rate (MMCFH)		Flow Units	
<input checked="" type="button" value="Gas"/>	<input type="button" value="Liquid"/>	0.00000		<input checked="" type="button" value="MMCF"/>	<input type="button" value="MCF"/>
Manual Override		Manual Gas Rate (MMCFH)			
<input type="button" value="OFF"/>		0.00000			
Flow Source					
<input type="button" value="Pulses"/>		<input checked="" type="button" value="4-20mA"/>			
Min Gas Rate (Do not odorize below)		Max Gas Rate (20mA)			
0.00000 MMCFH		0.00000 MMCFH			
<input type="button" value="Menu"/>			<input type="button" value="Home"/>		

**Figure 1:** Flow Page

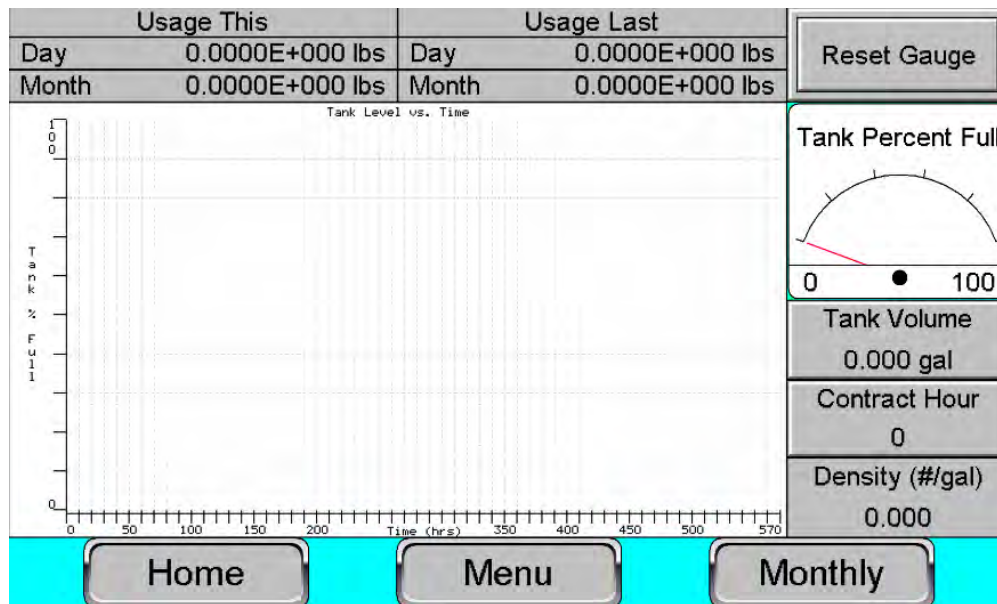
- **Isolation Alarm** added to detect solenoid failure. If excessive ticks are measured while the solenoids are supposed to be closed, the alarm will trigger.
- **Data Logs** now track solenoid cycles to monitor the frequency of Solenoid 2 usage.
- **Modbus:** Added hourly usage and gas volume to the register block.

- **Home Screen:** Version number now displayed.



**Figure 2:** Home Screen

- **Usage Page:** Users can now set the Contract Hour (0 to 23) to determine the time of day the usage data rolls over.



**Figure 3:** Usage Page

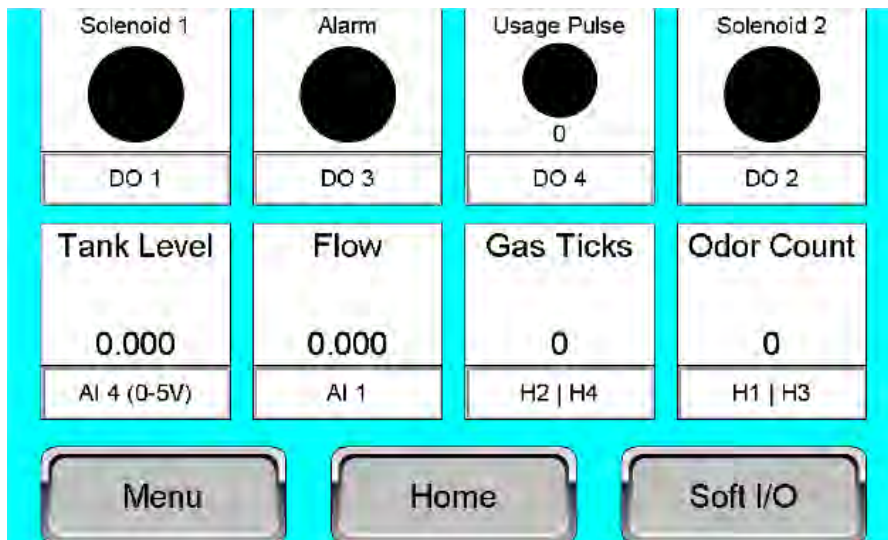
- **WebMI** enables remote control of the system for users with modems.



**Figure 4:** WebMI Remote Access

### Changes:

- **Analog Input 4 (AI 4):** Converted from a 4-20mA input to a 0-5V input for Tank Level monitoring.
- **User Interface Improvements:**
  - **I/O Page Consolidation:** Combined Counters, Analog I/O, and Digital I/O into a single, streamlined page.



**Figure 5:** I/O Page

- The Soft I/O subpage includes the IP configuration and Modbus settings.

IP Address	0.0.0.0	Modbus Address	0
IP Mask	0.0.0.0	Baud Rate	300
IP Gateway	0.0.0.0	Bits	8
		Parity	NONE
		Stop Bits	1
		Protocol	RTU
		RS232 / RS485	RS232
		Status	Timeout

Back

Home

Menu

**Figure 6:** Soft I/O Sub-page

- **Maintenance Page:** Redesigned for improved usability.

Solenoid 1 Override  
**OFF**

Solenoid 2 Override  
**OFF**

Solenoid 1 Cycles	0	Reset
Solenoid 2 Cycles	0	Reset
Filter Age	0	Reset

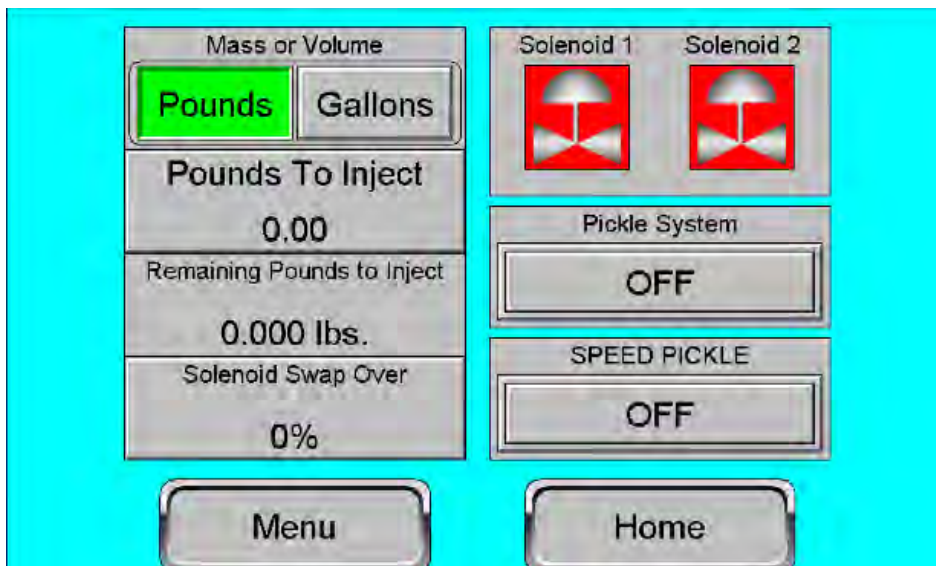
Menu

Home

**Figure 7:** Maintenance Page

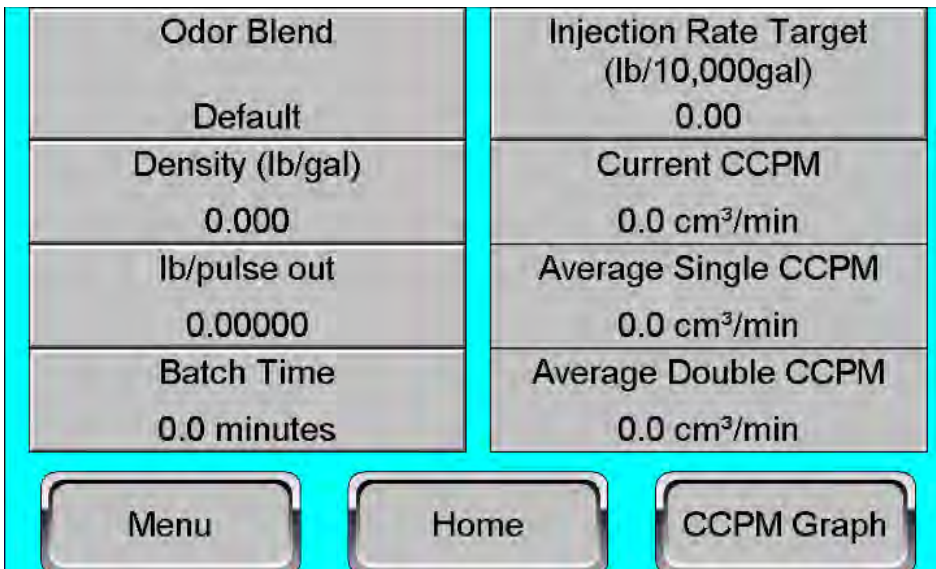


- **Quick Inject Page:** Reworked for a more intuitive experience.



**Figure 8:** Quick Inject Page

- **Odor Page:** Reorganized for symmetry.



**Figure 9:** Odor Page

- Standardized reset buttons across the user interface.
- **Miscellaneous UI Enhancements:** General improvements to the Home Screen, Alarms Page, and Usage Page for a smoother user experience.

### Fixes:

- **Odor Page:** Reworked CCPM readouts.
  - Current CCPM is no longer an average over ten seconds to prevent Double CCPM measurements averaged with Single CCPM measurements.
  - Single & Double CCPM indicators now reflect the average over the entire batch, improving accuracy by keeping measurements separate before averaging.
- **Alarm Improvements:**
  - **High Flow Alarm:**
    - Fixed a false Lo-Lo Alarm occurring when the Hi Flow Alarm was active.
    - The Hi Flow Rate setpoint in the alarm configuration now adjusts dynamically based on the units toggle.
    - The Hi Flow Alarm now automatically clears when the flow rate drops below the setpoint.
  - **Flow Signal Alarm:**
    - Corrected the enable/disable toggle in the alarm configuration.
    - The alarm is now prevented when the 4-20mA signal is not set as the current gas source.
  - **Isolation Alarm:** Implemented a delay to prevent false alarms on power cycle.

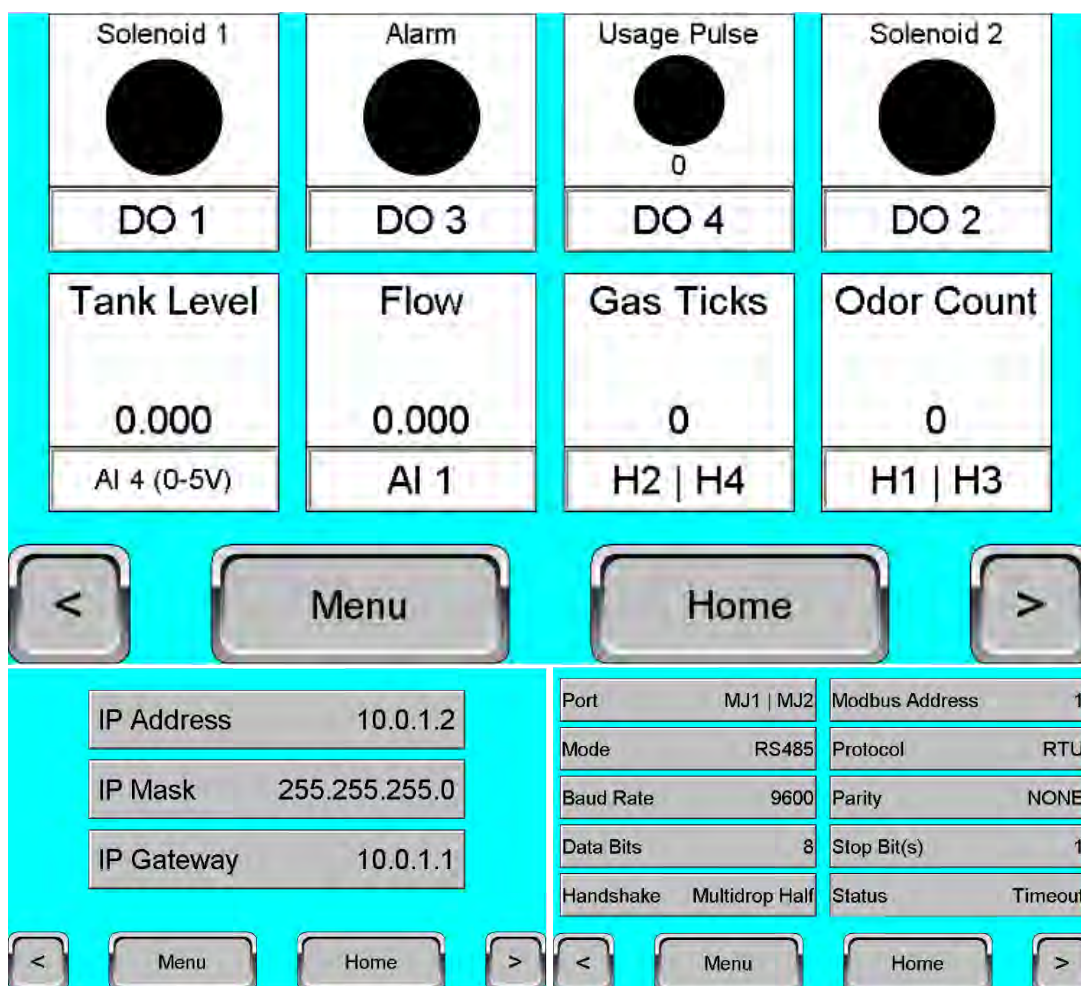
## Version 8.1

### New:

- **Odorant Usage Tracking:** Added daily and monthly logs to the data stored on the SD card.
- **Memory Failure Alarm:** An alarm has been added to detect instances where memory is not retained after a power cycle, helping to identify depleted memory batteries. Please note that this alarm will be triggered following a software update—this does not necessarily indicate battery depletion. Be sure to clear the alarm after updating.

### Changes:

- **Manual Flow Alarm:** Introduced a delay, so the manual flow rate override must be left on for more than an hour to activate the alarm.
- **I/O Page:** Now includes arrow buttons to scroll between sections of I/O. Split Soft I/O page into dedicated Modbus and IP Configuration pages.



Figures 10-12: I/O Pages



Fixes:

- **Usage Tracking:**
  - Resolved an issue where monthly usage data could become corrupted after a power cycle.
  - Fixed a bug that excluded the last hour of the day from the total calculation.
  - Contract Hour now applies to both logs and on-screen data.
- **Date Format Correction:** Fixed formatting for usage indicators and maintenance indicators.
- **Modbus:** Expanded and corrected Modbus settings.
- **Alarm Configuration:** Added a floor to the solenoid Max Time Open setting to prevent users from setting it to zero.

## Version 8.2

### New:

- **Standby Mode Implementation:** Allows users to inhibit the odorizer with a digital input.
  - The standby input is assigned to digital input 1 by default.
  - Added Standby Polarity (normally open/normally closed) to the alarm configuration to control the digital input.
  - Added a standby alarm, which can be disabled in the alarm configuration. This alarm activates when the unit is in standby mode.
- **Comprehensive Data Logging:**
  - Every batch now creates an entry in the data logs stored on the SD card.
  - Implemented an SD Low Storage alarm (noncritical) triggered when storage exceeds 80% capacity.

### Changes:

- **Login Log Enhancements:**
  - Now supports up to four WebMI logins simultaneously, in addition to the controller's local login.
  - A new entry is recorded each time the number of logged-in users changes.
- **Hi Gas Alarm Behavior:**
  - If triggered three times within an hour, the system will automatically shut down.
  - If the alarm remains active for three consecutive minutes, the system will shut down.
- **Max Time Open Alarm Behavior:**
  - The system now shuts down after consecutive Max Time Open alarms.
  - This alarm is triggered when the solenoid remains open too long, often because the injection target is not met.
  - A Max Time Open Limit is now configurable in the alarms settings, defaulting to four cycles before system shutdown.

### Fixes:

- Fixed an error that prevented new usage pulses after a power cycle