

GPL Odorizers

Software Release Notes

For GPL750 (XL4) Version 6

Harrison Baer
9-17-2025

Version 6.0

New:

- **Login Page:** Users can now toggle Language and Units from the login screen.
 - Metric support added, including automatic unit conversions.

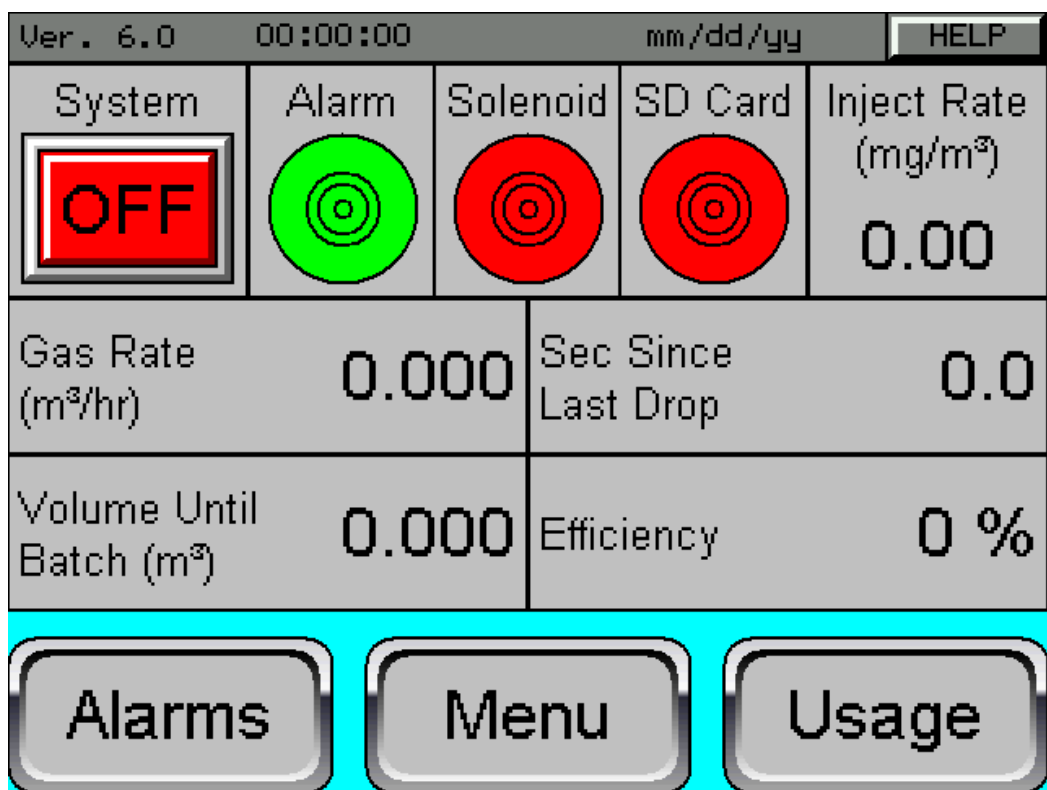
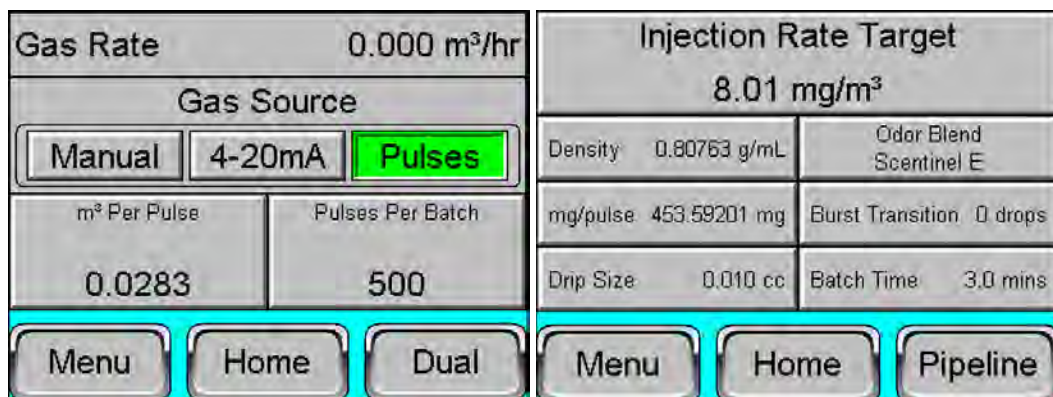


Figure 1: Home Screen (Metric)



Figures 2 & 3: Gas & Odor (Metric)

- Spanish language option now available.

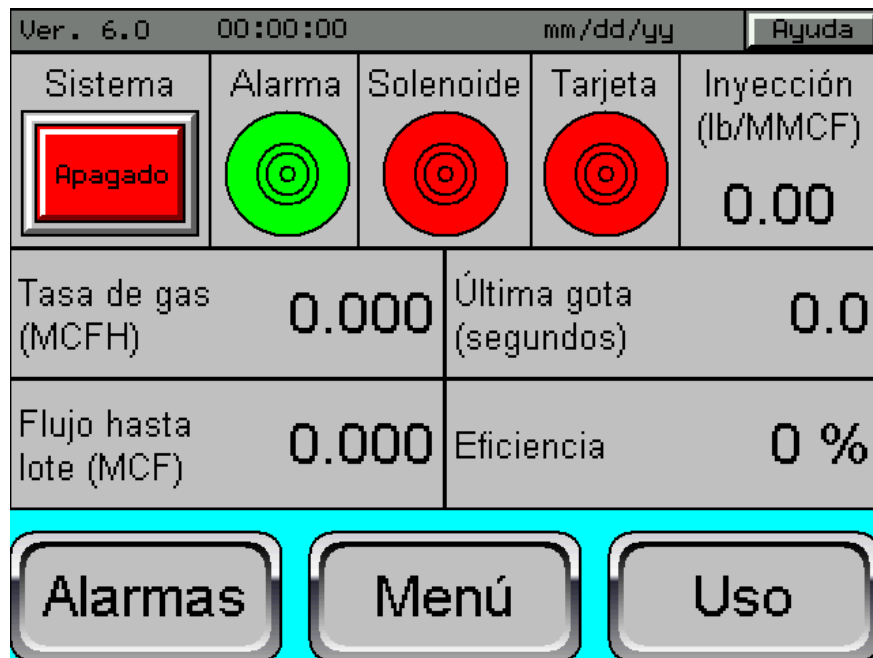


Figure 4: Home Screen in Spanish

- Language and Unit preferences are retained after power cycles.
- Tank Page:** Introduced a “Start Level” feature, allowing users to set a custom starting percentage for their tank.

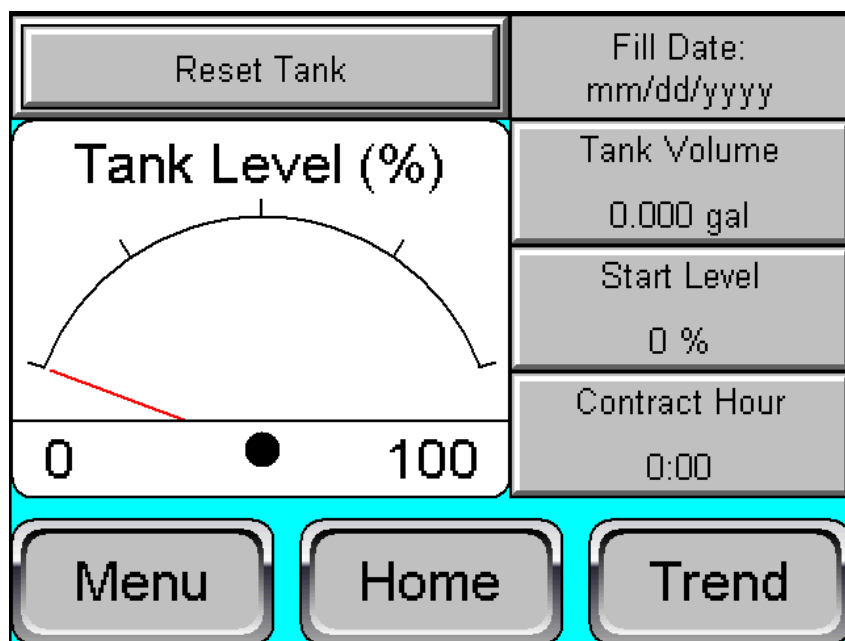


Figure 5: Tank Page

- **I/O Page:** Added a Pulse Width setting for the Usage Pulse output.
 - Users can also adjust the mass per pulse directly next to the pulse counter (see Figure 6).





Counters		
Gas Ticks	0	H2 H4
Drip Count	0	H1 H3
Usage Pulses	0	0.001 lbs
Usage Pulse Width	●	50 ms
<div>     </div>		

Figure 6: I/O Page (Counters)

Changes:

- **Configuration Updates:**
 - Units are now included in the main config file. Loading a metric config will automatically switch the system to metric mode.
 - Removed the hourly usage mass from the config file, as it is calculated based on the existing hourly drip count data.
 - Moved the Usage Pulse Mass (“#/Pulse”) to the I/O Config file.
 - Added the Usage Pulse Width to the I/O Config file.
 - The autosave slot for the Usage Config file has been renamed to “Usage 2”, providing users with an additional manual save slot.

Fixes:

- Removed the autosave function for the Usage Config file to prevent file corruption.
- Restructured system memory architecture to address possible memory leaks and improve stability.
- Reprogrammed key system components to improve runtime efficiency.
 - Streamlined usage tracking logic for faster execution.
- Hourly drip count is now correctly preserved after a power cycle, ensuring accurate calculation of the hourly usage mass.
- Resolved an issue where the current hour's usage was not included in the total usage log.
- Corrected an error that prevented users from manually acknowledging the I/O Expansion Alarm.